

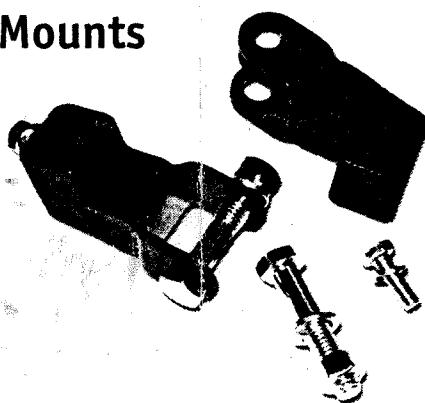
TERALEX

Installation Guide for Rear Shock Mounts for TJ

This simple kit helps avoid damage to shocks in situations where pinion angles might cause shock canisters to contact the spring pads. With this kit, you can restore your shock mounts to a position more similar to stock.

Depending on the rotation of the axle housing, the RST can change the length requirements of the shock by as much as one inch.

Rear Shock Mounts

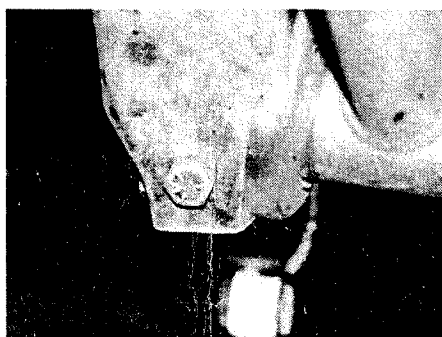


Component list

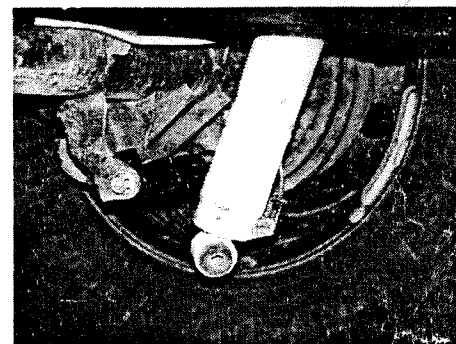
Please check the components in your kit prior to beginning installation. Each kit should include:

- 2 Bolts (1/2" x 2.5")
- 2 Nuts (1/2")
- 2 Lock Washers (1/2")
- 2 Bolts (3/8" x 1")
- 2 Lock Washers (3/8")

1. Disconnect the shocks at the rear axle. Keep the bolts. They will be needed later.
2. If the bracket has been damaged, it might need to be repaired in order to get the part to fit.
3. Place the shock extension into the bracket so that the eyelet points outward and the hooked end faces upwards.
4. Insert the smaller 3/8" x 1" bolt into the rear of the axle shock bracket as shown in the photograph below.



5. Securely fasten the stock bolt removed in step 1 into its original position.



6. Connect the shock to the bracket extension using the new bolt included with the kit.
Note: For vehicles with oversized exhaust, Check exhaust pipe clearance with the shock absorber, and if needed realign exhaust.
8. Retorque after 100 miles.

Tera Manufacturing
8385 S. Allen St., Unit 115
Sandy, UT 84070
phone/801.256.9897
fax/801.256.9879

Revised 27 Feb 01