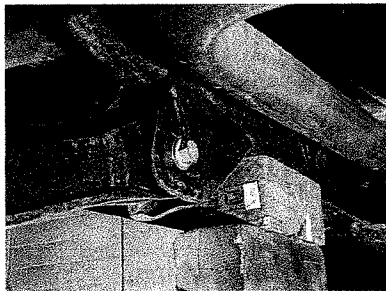


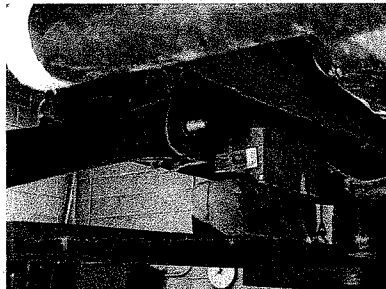


Installation Instructions
for
TellicoTough[™] Engine Skid Plate for '97-up Jeep® TJ
with 4.0L engine

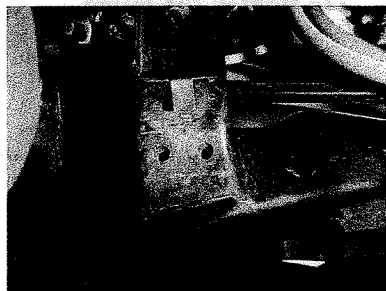
Thank you for purchasing your new *TellicoTough*[™] engine skid plate. It is designed to give you peace of mind while traversing even the toughest trails.



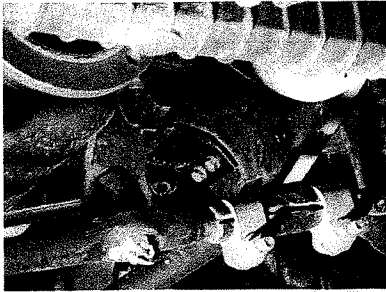
Step 1: Verify the position of the passenger side lower control arm bolt. If the threaded portion of the bolt is facing the inside of the chassis as shown in the photo below, simply remove the nut and go to Step 2. Otherwise, to install the skid plate you will need to perform the first step with the vehicle on level ground. **Do not jack up the vehicle at this point!** It is important that the vehicle is on level ground so that there is no load on the lower control arm. As shown in the figures to the right, the passenger side, lower control arm bolt needs to be removed and then re-installed with the bolt head to the outside of the chassis.



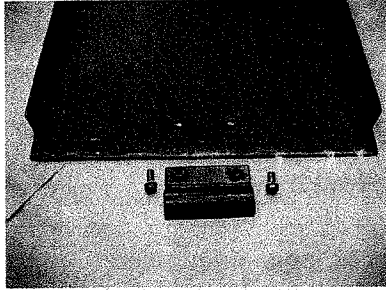
The nut should be left off. This will be re-installed later. Once this is done, the vehicle may be jacked up to provide more room to work. **Be sure to place jack stands under the vehicle before working underneath it!**



Step 2: Take the T-shaped plate with integral nuts and slide it into the driver's side motor mount through the top opening. Once the nuts can be seen through the two holes in the lower side of the motor mount, the tab may be folded over to hold the nuts in position.



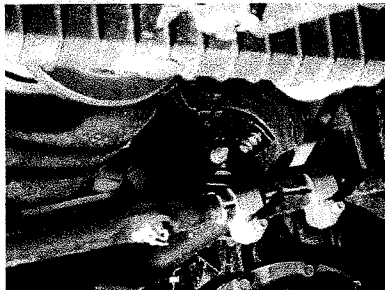
Step 3: Take the mounting plate and attach it to the bottom of the motor mount using two of the 3/8-16 bolts with lock washers as shown in the picture. The view in the picture is looking from the front of the vehicle.



Step 4: Take the engine skid plate and loosely attach the transfer case skid plate clamp using two 3/8-16 bolts with lock washers. Be sure that the hook shaped portion of the clamp is facing the back of the skid plate.

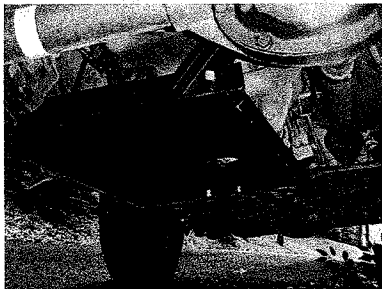
Step 5: Lift the engine skid plate and place the skid plate clamp over the forward lip of the factory, transfer case skid plate. Then rotate the engine skid plate into position and slide it over the threaded portion of the lower control arm bolt that you reversed in the first step.

Step 6: Install the nut on the lower control arm bolt to hold the skid plate in position.



Step 7: Take the strut rod and attach it between the mounting plate and the skid plate. The end of the strut rod with the angled cut should be near the motor mount. Use one 3/8-16 bolt, lock washer, and nut to bolt it to the front of the skid plate and use the remaining bolt, lock washer, and nut to attach it to the mounting plate on the motor mount.

Step 8: Tighten all hardware once everything is fit together. Be sure to tighten the lower control arm nut to the factory recommended torque.



From one Jeep enthusiast to another I hope you enjoy your *TellicoTough*[™] engine skid plate!

Sincerely,

Eric Kootte

President, Skid Row Automotive, Inc.

WARRANTY

1. Skid Row Automotive Inc. warrants all products sold by Skid Row to be free of defects in material and/or workmanship for life after the initial purchase, for the original purchaser.
2. If a product is found to be defective by Skid Row Automotive Inc. in its sole discretion, Skid Row's only responsibility shall be limited to repair or replacement of the defective product. Skid Row will not be responsible for any costs, losses, or damages incurred as a result of loss of use of product.
3. This warranty is subject to the following limitations in addition to any imposed by virtue of applicable law.

The warranty applies only to Skid Row products purchased from an authorized Skid Row Automotive Inc. dealer and is valid for the original purchaser only.

All products returned to Skid Row for warranty inspection must receive prior return authorization, which can be provided by phone. For authorization call (717)-582-4580.

Excluded from coverage under this warranty are the following:

- 1) Damage caused by misuse, abuse, or neglect.
 - 2) Damage caused by improper installation or mounting of components.
 - 3) Damage caused by anything other than defects in materials and workmanship.
 - 4) Normal wear and tear.
 - 5) Rusting and the coating.
 - 6) Shipping costs are not covered.
 - 7) Impact damage is not covered by warranty. Skid plates are meant to prevent damage to more important components and are not impervious to damage themselves.
4. Warranty coverage is void if any modification, change, or alteration has been made to the product that is not specifically instructed in writing by Skid Row Automotive Inc..
 5. All warranty claims must be accompanied by the original purchase receipt from an authorized Skid Row dealer. The invoice or charge slip must clearly identify the dealer.

All warranties implied by state law, including the implied warranties of merchantability and fitness for a particular purpose, are hereby limited to the duration of the written warranty. Some states do not allow limitations on how long an implied warranty lasts, so the above may not apply to you. With the exception of any warranties implied by state law as hereby limited, the foregoing express limited warranty is exclusive and in lieu of all other warranties, guarantees, agreements, and similar obligations of the manufacturer or seller. This warranty gives you specific legal rights, which vary, from state to state.

Skid Row Automotive, Incorporated
Skid plates and accessories for when the trail gets rough.
717-582-4580/1-800-786-9249
Fax 717-582-2335

Check out our web site at www.skidplates.com

